

CEDAR RAPIDS, IOWA



J.E. ADAMS INDUSTRIES
OWNERS MANUAL

MODEL 8900 SERIES

- PAGE 2 PRODUCT INFORMATION
- PAGE 3 SPECIFICATIONS
- PAGE 3 IMPORTANT SAFETY INFORMATION
- PAGES 4-5 INSTALLATION
- PAGES 5-6 PROGRAMMING
- PAGE 6 OPERATING
- PAGE 6-7 MAINTENANCE
- PAGES 7-8 TROUBLESHOOTING
- PAGES 8-11 PARTS LIST
- PAGE 12 WIRE DIAGRAMS

PRODUCT INFORMATION

Please take a moment to fill out the information below in order to aid us with any future sales or service inquiries. Model number and serial number information can be found on the serial tag located inside the control box and/or on the lower exterior of the can. Key number can be found on the tag that comes attached to the keys. There may be more than one key number depending on unit.

Please keep this information with your records.

MODEL#: _____

SERIAL#: _____

KEY NUMBER(S): _____

DATE PURCHASED: _____

DISTRIBUTOR: _____

**J.E. Adams Industries
1025 63rd Ave. S.W.
Cedar Rapids, IA 52404
1-800-553-8861
www.jeadams.com**

SPECIFICATIONS:

Unit specifications:

Voltage: 110v, 60Hz
Amperage: (1)20 amp service is required for this unit
Weight: 195 lbs with pallet attached

Vac specifications:

Motors: (2) Ametek 110v motors
Fuses: (2) 10 amp fuses
Relays: (1) DPDT 30 amp rating per contact

Shampoo specifications:

Compressor: (1) Thomas 110v, 1/12th hp compressor
Solenoid: (2) Triple solenoid block, 24VAC
Relays: (1) Ice cube, DPDT

NOTE: "UNIT INTENDED FOR COMMERCIAL USE ONLY"

IMPORTANT SAFETY INSTRUCTIONS

When using an electrical appliance, basic precautions should always be followed, including the following:

READ ALL INSTRUCTIONS BEFORE USING (THIS APPLIANCE)

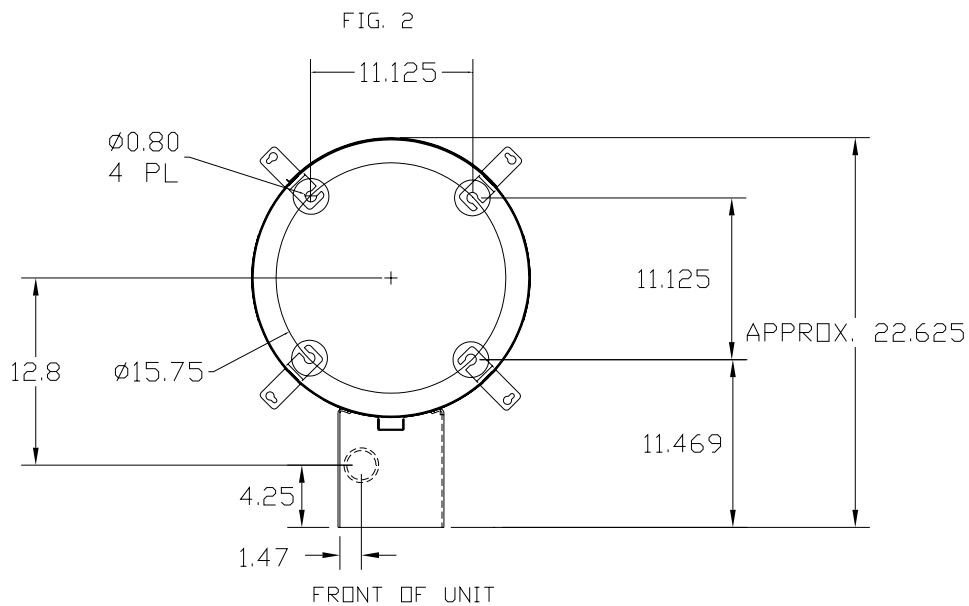
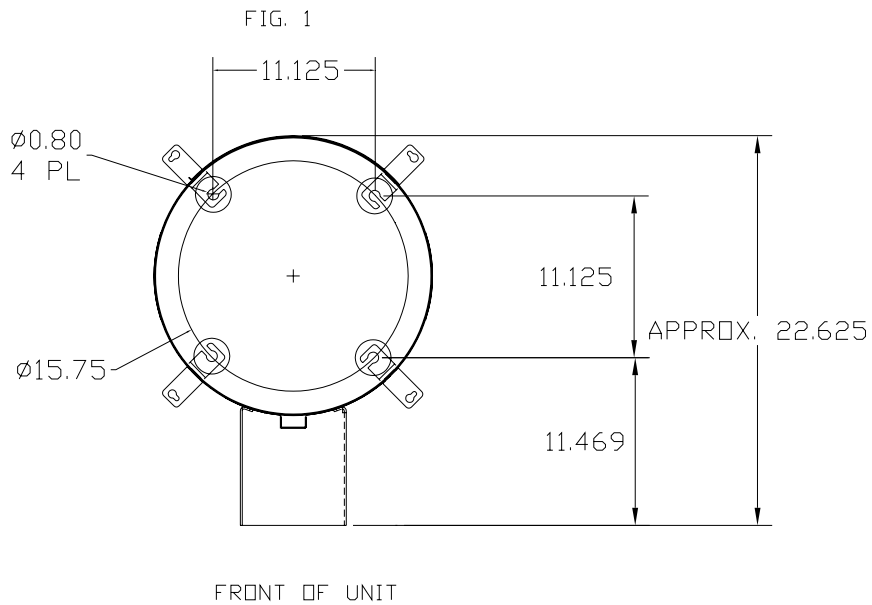
WARNING – To reduce the risk of fire, electric shock, or injury:

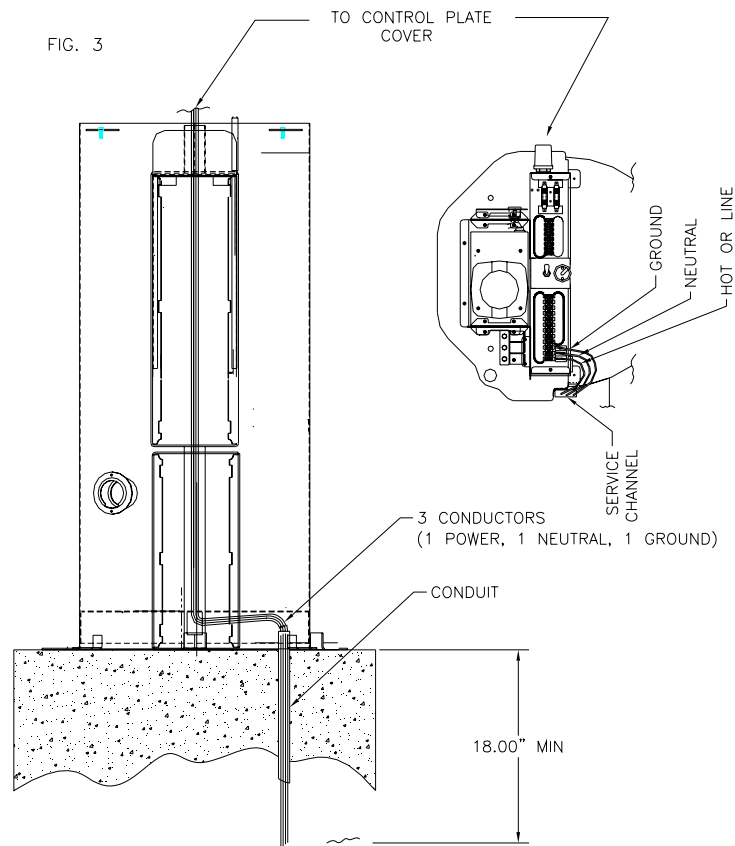
- Do not use on wet surfaces.
- Use only as described in manual. Use only manufactures recommended attachments.
- Do not allow to be used as a toy. Close attention is necessary when used by or near children.
- Do not put any object into openings. Do not use with any opening blocked; keep free of dust, lint, hair and anything that may reduce air flow.
- Keep hair, loose clothing, fingers, and all parts of body away from openings and moving parts.
- Do not use to pick up flammable or combustible liquids, such as gasoline, or use in areas where they may be present.
- "Do not pick up anything that is burning or smoking, such as cigarettes, matches, or hot ashes."
- "DO not use without dust bag and/or filters in place."

SAVE THESE INSTRUCTIONS

Installation Instructions:

- Determine location to mount unit (**“DANGER” “THIS EQUIPMENT INCORPORATES PARTS SUCH AS SWITCHES, MOTORS, OR THE LIKE THAT TEND TO PRODUCE ARCS OR SPARKS THAT CAN CAUSE AN EXPLOSION. WHEN LOCATED IN GASOLINE-DISPENSING AND SERVICE STATIONS INSTALL AND USE AT LEAST 20 FEET (6 M) HORIZONTALLY FROM THE EXTERIOR ENCLOSURE OF ANY DISPENSING PUMP AND AT LEAST 18 INCHES (450 MM) ABOVE A DRIVEWAY OR GROUND LEVEL.”**)
- Run 20amp wire service to location underneath canister. Run wire to top of units as shown in fig. 3
- **Grounding Instructions:** This appliance must be connected to a grounded metal, permanent wiring system; or an equipment-grounding conductor must be run with the circuit conductors and connected to the equipment-grounding terminal or lead on the appliance.
- Mount unit to location and use fig. 1 for mount pattern
- If unit is vault ready see fig. 2 for vault tube location.





- Once unit has been installed use 5871B8 cap plugs supplied with unit to seal holes in canister bottom located in lower cleanout door. Then connect to power, insert shampoo and spot formula into bottom door and attach lids to appropriate bottles.
- Turn unit on and move to program instructions.

Programming Instructions:

Coin acceptor:

- No programming to acceptor needed if unit was purchased with the standard Imomex Z32 electronic acceptor (8149-92 our part number) is pre-programmed to accept US quarters, .984 tokens, US \$1 coin and 1.073 token. Acceptor is pre-programmed before it is sent to J.E. Adams.
- If different acceptor was purchased, see additional literature sent along with unit for programming info.

Bill acceptor:

- Bill acceptor comes pre programmed from J.E. Adams and should not require any changes. If additional programming is needed to acceptors please refer to additional literature sent along with this unit.

Display:

- Unit may be programmed when received depending on information given at that the time of order.
- To program follow the instructions below.

Display programming with remote:

- 1) To program, power must be turned on.
- 2) Insert plug into back of display and press the edit key on remote pad.
- 3) The timer will display "total coins". This is the amount of coins that have been put through machine since the last time it was zeroed out. To zero, press delete key. To save, press the save key. The unit will now display "saved". This function allows you to monitor the amount of coins the machine takes.
- 4) Next, the timer will display "coins to start". Use the up and down arrow keys to change the amount of coins to start. Press the save key to save your input. The display will confirm this by displaying the word "saved".
- 5) Timer will now display "coins to start b". Follow the same procedure as step d.
- 6) the timer now displays "cycle time". To change this time in 10 second intervals, press the left arrow key. Then press the up and down arrow keys to change time. To change time by one second intervals, press the right arrow key. Then press the up and down arrow keys to change time.
To save the "cycle time", press the save key. The timer will now read "saved".
- 7) Timer now displays "cycle time b". Follow same procedure as step 6.
- 8) Timer now reads "last coin beep". Change reply from 10 sec to 1 min or vice versa by pressing the "n" key. To save the desired "last coin beep", press the save key.
- 9) The "welcome message" will now appear with the character located in the center of the board. If the character is blank, use the up and down keys. You have 36 places to put characters. To move the message left one space, press left arrow key. To insert a character, press the insert key. To delete a character, press the delete key. To save message, press the save key.
- 10) Now the "sales" message will appear. It also has 36 characters. Follow the same procedure as in step 9. The sales message will connect to the end of the welcome message.
- 11) Now the "exit message" will appear. It also has 36 characters. Follow the same procedure as step 9. Note the welcome message and sales message scroll on the display at all times. The exit message scrolls three times after the timer has timed out.
- 12) Disconnect remote from display. Display is now programmed and ready for use.

Operating Instructions:

- Select desired function.
- Insert coins or bills to start desired function.
- If scent is selected, it is recommended that you vacuum before applying formula.
- If other function is selected other than original selected item unit will recalculate timer based on the amount of money it takes to start the specific function.
- Once service is used, hang up hose.

Maintenance:

- Filter bags should be taken out weekly and shaken out. Also it might be a good idea to keep a new set of bags on hand so that once a month or longer you can take original bags out and wash them.
- Check vac hose for cracks on a weekly basis.
- Check scent bottles to assure that they are full.
- Clean canister with a stainless steel cleaner as needed.
- Check motor brushes approx. every 3 months for excessive wear. Motor brushes should be changed if they are shorter than ¼". ***Please disconnect power before doing this.***
- Check all scent lines and assembly for any signs of wear.
- All servicing of machine should be conducted by an authorized service representative.

Troubleshooting: ***DISCONNECT POWER BEFORE SERVICING***

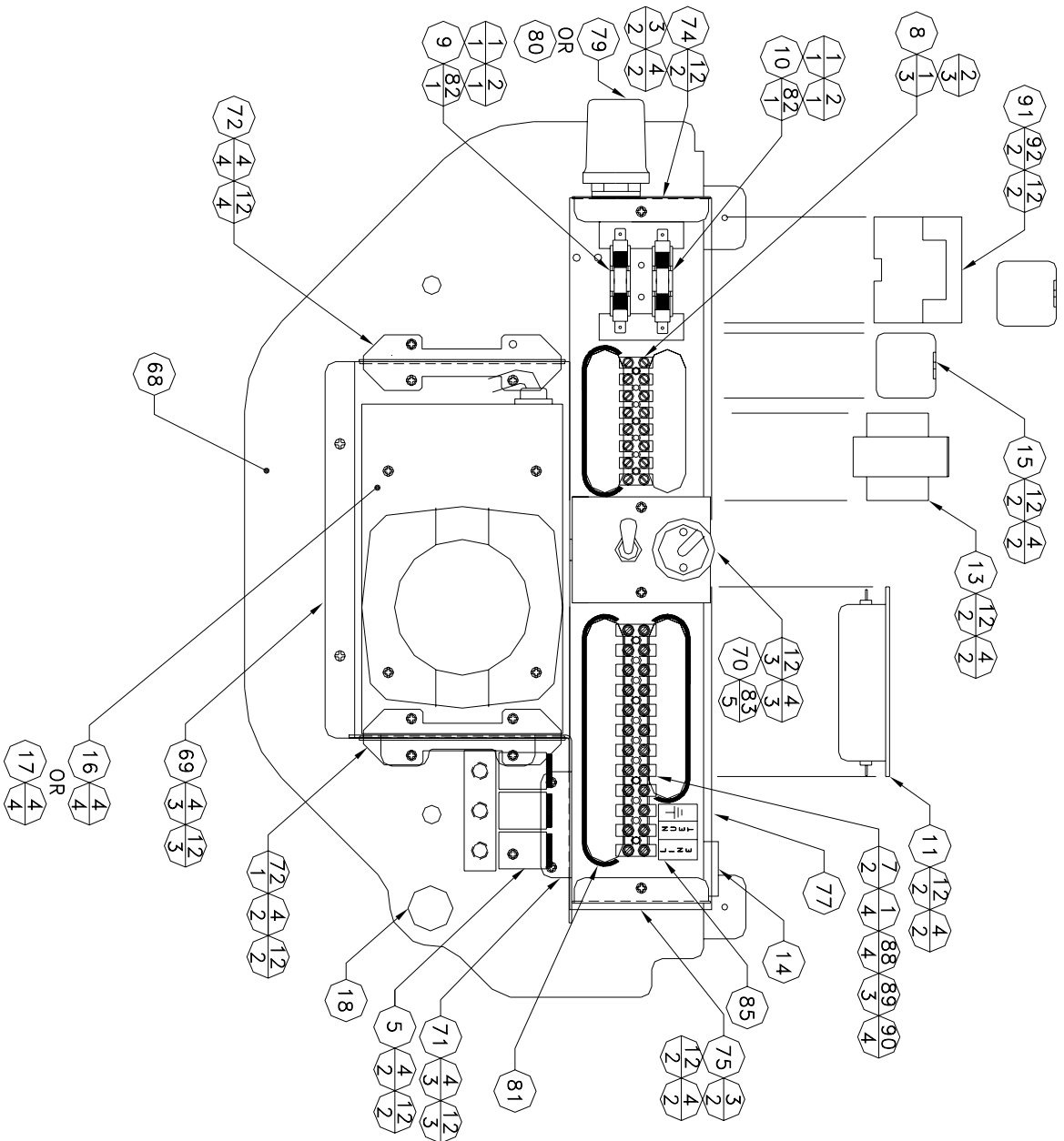
| Problem | Possible cause | Solution |
|---|--|---|
| Unit is not powered | Power switch under dome of unit is not in the on position | Flip switch to on |
| Display is not powering | Power switch under dome of unit is not in the on position Check transformer inside main power box in unit. Is there 24VAC at output terminal? | Flip switch to on Replace transformer (8131-2) |
| Display reads "fail" | Coin acceptor putting out continuous pulse Program in display may be lost | Press mode button on display. If fail does not go away replace coin acceptor. (8149-92) Reprogram display. If fail goes away and then comes back, replace battery in display. |
| Unit keeps blowing my breaker from my incoming power source | Inadequate wire size supplied to machine Wrong size breaker | Call electrician and install proper wire size for 20amp service versus length or run. Install correct breaker(only use wire size that is adequate to handle 20 amp breaker) |
| Fuses for vac motors keep blowing. | Inadequate wire size supplied to machine Motor brushes may be bad or too short | Call electrician and install proper wire size for 20amp service versus length or run. Replace motor brushes (8055BR) |
| Vac motors will not shut off after display has timed out | Check contactor for vac located on upper control plate control | If contact is stuck open replace with new contactor. (5967D001) |
| Scent keeps running after display has timed out | Check surface mount relay labeled scent for contact stuck. | If contact is stuck open replace with new relay(8768) |

| | | |
|--|--|---|
| Unit has lost suction | Vac hose clogged | Clean out debris from vac hose |
| | Filter bags need cleaned | Clean out filter bags or replace (8076) |
| | Vac hose is damaged | Replace vac hose (2036) |
| | Cleanout door gaskets torn or worn | Replace gaskets (8159) |
| Unit has shut down For no apparent reason | This unit has a reset thermal limiter in the compressor. Unit may have shut down due to excessive heat | Turn off power to the machine and wait for a period of 5 minutes. Reapply power and activate machine. |

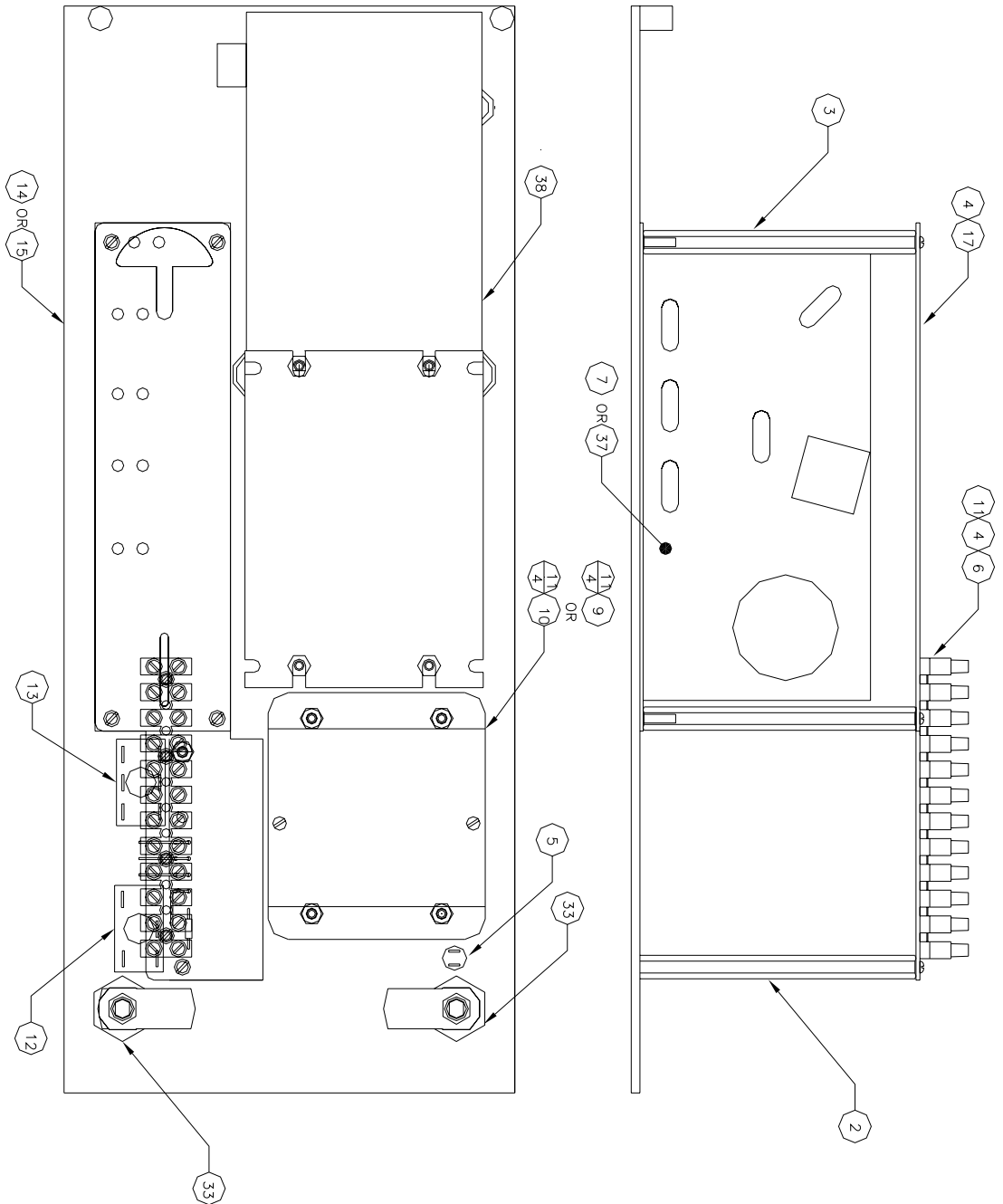
PARTS LIST:

PARTS NOT SHOWN ON DRAWING:

| | |
|------------|--|
| 2091 | SWIVEL CUFF |
| 2056-BLACK | 2" x 15' BLACK VAC HOSE |
| 8051G | MOTOR BRACKET |
| 8055 | VAC MOTOR |
| 8079 | FILTER BAGS |
| 8159 | DOOR GASKET |
| 8057 | MOTOR GASKET |
| 8306 | PLASTIC DOME |
| 8638 | PIN LOCK (LOCK USED ON COIN BOX) |
| 8900-22 | PRICE DECALS |
| 8900-23 | DOMES DECAL |
| 8900-24 | TOP DOOR DECAL |
| 8900-25 | DECAL |
| 8900-26 | CANISTER DECAL |
| 8435-5 | FRAGRANCE LABELS |
| 8957VS | COIN CHUTE- LOCATED IN TOP BOX |
| 8900W | CANISTER WELDMENT COMPLETE |
| 3100 | CLEAR VINYL TUBING- TUBING IS USED FOR SCENT BOTTLES TO SOLENOID |
| 8153-1 | CLEANOUT DOOR LATCH |
| 8429-1 | DECAL "HANG HOSE HERE" |
| 8838 | ½ GALLON ROUND JUG |

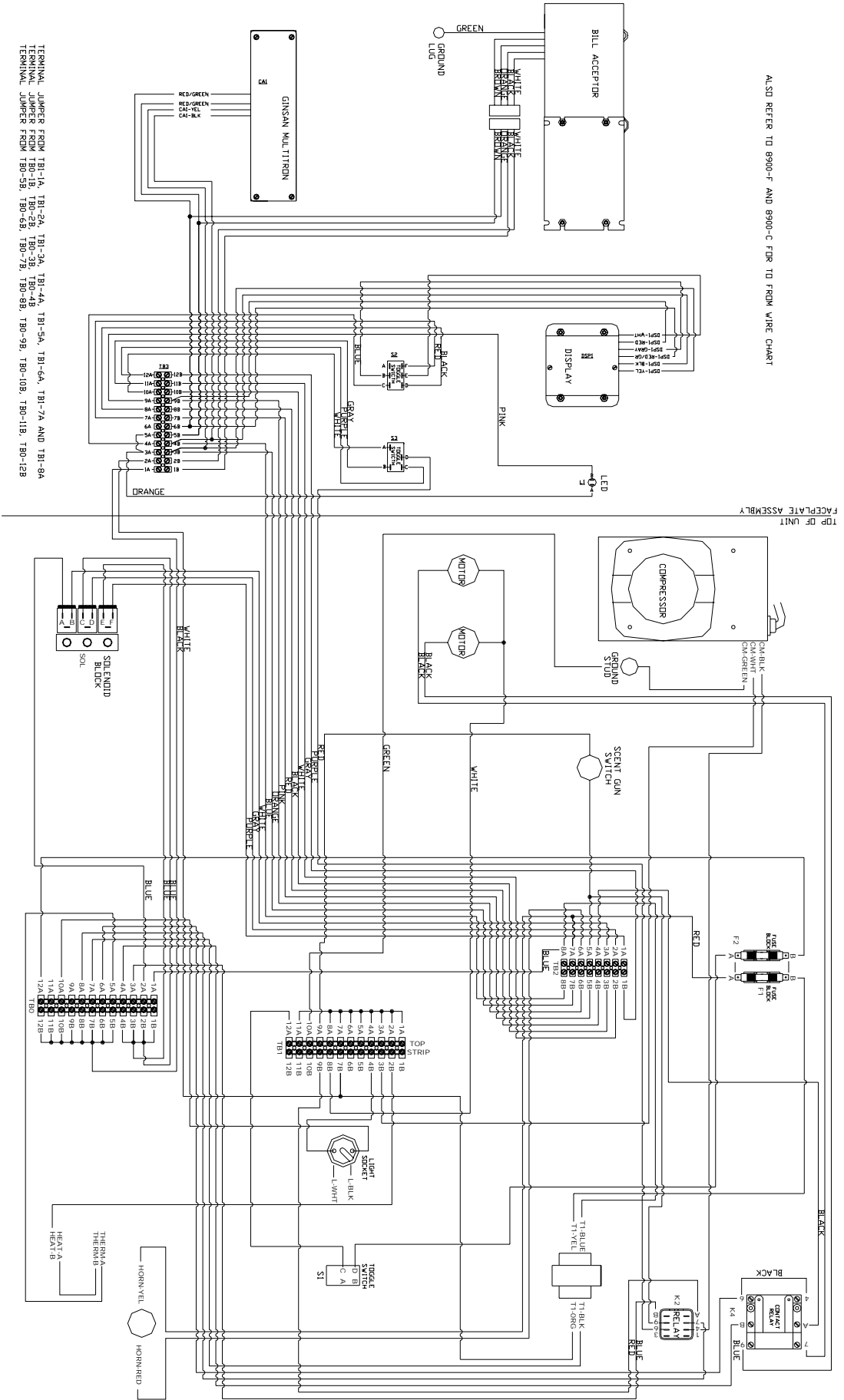


| BILL OF MATERIALS | | |
|-------------------|--------------|---------------------------|
| ITEM # | PART NUMBERS | DESCRIPTION |
| 1 | 5603D10 | #6-32 NYLOC NUT |
| 2 | 5627D1 | #6-32 x 15/16 SLOTT SCREW |
| 3 | 5629D2 | #8 x 1/2 SELF TAP |
| 4 | 5663D1 | #8-32 x 1/2 PHIL HEAD |
| 5 | 5859K1 | SOLENOID VALVE ASSY. |
| 6 | 5944D001 | TERMINAL STRIP, 12 POS |
| 7 | 5944D002 | TERMINAL STRIP, 8 POS |
| 8 | 5979D1 | 20 AMP FUSE |
| 9 | 10 5979D6 | 3 AMP FUSE |
| 10 | 5994D001 | EMI FILTER |
| 11 | 12 8045 | #8-32 NYLOC NUT |
| 12 | 13 8131-2 | TRANSFORMER, IDX |
| 13 | 14 8131-3 | AUDIO ALERT |
| 14 | 19 8760 | RELAY, DPDT, 24 VAC |
| 15 | 16 8824K1 | COMPRESSOR ASSY, 110V |
| 16 | 17 8824K2 | COMPRESSOR ASSY, 220V |
| 17 | 18 8898-1 | AIR FRESH GUN & HOSE |
| 18 | 68 8900-70 | CONTROL PLATE, V-SCENT |
| 19 | 69 8900-71 | BRACKET, COMP. MAIN |
| 20 | 70 8900-72A | LIGHT BRACKET ASSY. |
| 21 | 71 8900-73 | PARTITION, VAC-SCENT |
| 22 | 72 8900-74 | BRACKET, COMPRESSOR END |
| 23 | 73 8900-77 | BRACKET, SOLENOID |
| 24 | 74 8900-78 | BRACKET, PHOTOCELL |
| 25 | 74 8900-79 | BRACKET END, FRONT |
| 26 | 74 8900-80 | TERMINAL COVER, REAR |
| 27 | 77 8900-81 | TERMINAL COVER, FRONT |
| 28 | 79 8920-3 | PHOTOCELL, 110V, 60HZ |
| 29 | 80 8920-8 | PHOTOCELL, 220V, 50HZ |
| 30 | 81 5005D2 | GROMMET EDGING, SLOTTED |
| 31 | 82 5982D3 | FUSE BLOCK-3AG |
| 32 | 83 5606D14 | #10 FENDER WASHER |
| 33 | 84 5912D4 | FLAG TERMINAL |
| 34 | 85 8176 | DECAL, LINE-NEUTRAL-GRD |
| 35 | 86 5934D1 | CABLE TIE BLACK 3,75 |
| 36 | 87 8900-72B | LIGHT BRACKET ASSY, EURO |
| 37 | 88 5627D3 | #6-32 X 2 SLOTT SCREW |
| 38 | 89 8900-600 | TERMINAL JUMPER |
| 39 | 90 8900-801 | SPACER, CIRCUIT BOARD |
| 40 | 91 5967D001 | RELAY, POWER-DPST |
| 41 | 92 5610D3 | SCREW-8-32 X.75 SL R HD |
| 42 | 93 5979D2 | FUSE, 10 AMP |



| BILL OF MATERIALS | | | DESCRIPTION |
|-------------------|--------------|-------------------------|-------------|
| ITEM # | PART NUMBERS | | |
| 6 6 6 3 | 500005 | STANDOFF | |
| 10 10 10 4 | 5627D2 | #6-32x5/8 SCREW | |
| 1 1 1 5 | 5913D8 | LED, GREEN | |
| 1 1 1 6 | 5944D003 | TERMINAL STRIP, 12 POS | |
| 1 7 | 8107-1 | SECURE COIN, EURO | |
| 1 1 9 | 8131-8 | DISPLAY, LTT800FH | |
| 1 10 8131-13 | | DISPLAY, EURO-POUND | |
| 8 8 12 11 | 5603D18 | #6-32 INTLOC NUT | |
| 1 1 1 12 | 8849D001 | SP3T SWITCH | |
| 1 1 1 13 | 8849D002 | DPDT SWITCH | |
| 1 1 1 14 | 8900-7W | FACEPLATE, VALIDATOR | |
| 1 1 1 15 | 8900-13W | FACEPLATE, NO VALIDATOR | |
| 1 1 1 17 | 8900-82 | TERMINAL BRACKET | |
| 2 2 2 33 | 8953 | LOCK W/KEYS | |
| 1 1 1 37 | 8149-92 | MONEX ELECTROIC ACCEPT | |
| 1 38 | 8130-6 | MARS VALIDATOR | |
| 1 39 | 9500-56 | WIRE CONNECTOR ASSEMBLY | |

ALSO REFER TO 8900-F AND 8900-C FOR TOP FROM WIRE CHART



TERMINAL JUMPER FROM 181-1A, 181-2A, 181-3A, 181-4A, 181-5A, 181-6A, 181-7A AND 181-8A
 TERMINAL JUMPER FROM 180-1B, 180-2B, 180-3B, 180-4B, 180-5B, 180-6B, 180-7B, 180-8B, 180-9B, 180-10B, 180-11B, 180-12B
 TERMINAL JUMPER FROM 180-3B, 180-5B, 180-7B, 180-9B, 180-10B, 180-11B, 180-12B